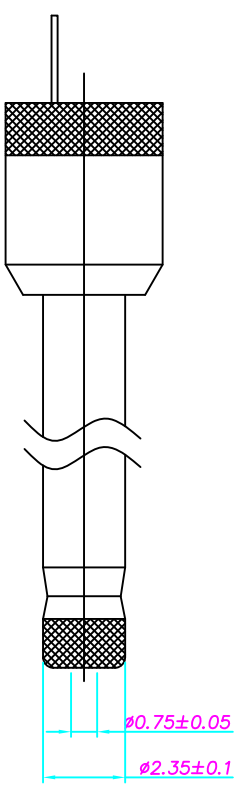
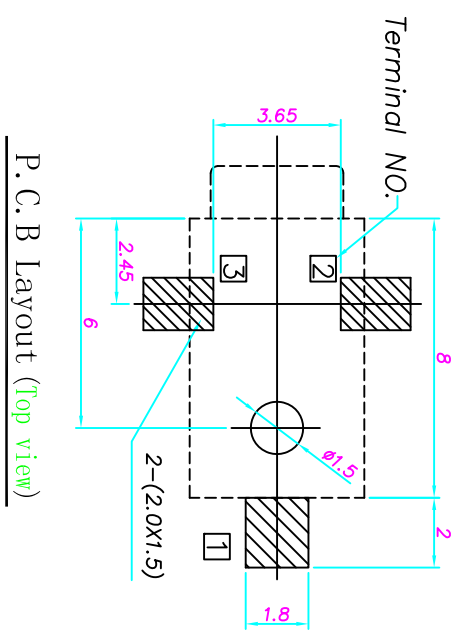
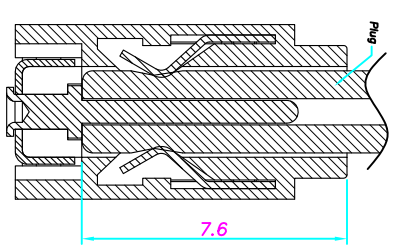
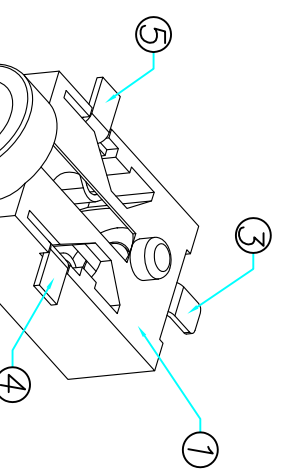
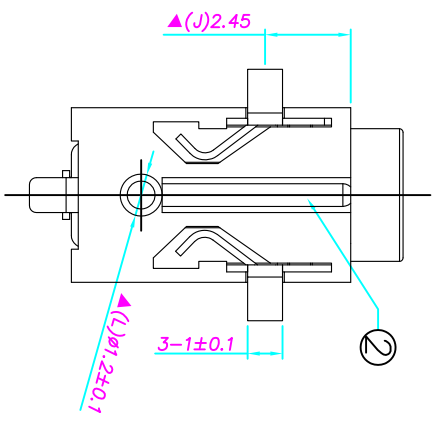
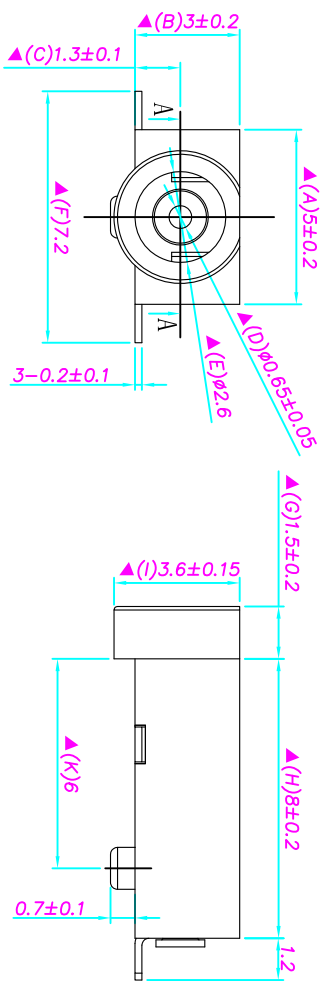


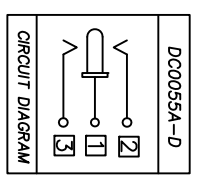
記號	設變內容	日期	修改	核准
▲	標示變更	2010.12.09.	何軍	何照雲



DC MATE PLUG

SPECIFICATION

1. Rating : DC 12V 1A;
2. Contact resistance: $\leq 30m\Omega$;
3. Insulation resistance: $\geq 100M\Omega$ (DC500V);
4. Withstand voltage: 500VAC ;
5. Insertion and extraction force: 3-30N;
6. Life test: 5,000 cycles;
7. Operation temperature range: -20°C~70°C;
8. Preservative temperature range: -40°C~85°C;
9. Sign "▲" is importance dimension.



□ : TERMINAL NO.

NO.	DESCRIPTION	QTY	MATERIAL	PART NO.	REMARK
⑤	Tip spring	1	Beryllium bronze	DC00055A-03(TP-1308)	Silver plating
④	Tip spring	1	Beryllium bronze	DC00055A-02(TP-1307)	Silver plating
③	Center pin terminal	1	Brass	DC000550-01(WP-1296)	Silver plating
②	Center pin	1	Brass	DC000550-99A(YZ-1299)	Silver plating
①	Housing	1	PA9T	DC000550-S1(ST-1295)	

UNLESS OTHERWISE SPECIFIED, DIMENSIONS ARE IN MILLIMETERS		TYPE: DC JACK		MODEL NO: DC00055A-DA		PAPER NO: A4		PAGE 1 OF 1	
DESIGNER BY:	CHECK BY:	APPROVED BY:	SCALE	VER	承永實業有限公司 BLUE SOURCES ELECTRONICS CO.,LTD.				
±0.30	±0.20	±3.0°	5:1	1					
±0.10	±0.10	±2.0°							
±0.05	±0.05	±1.0°							